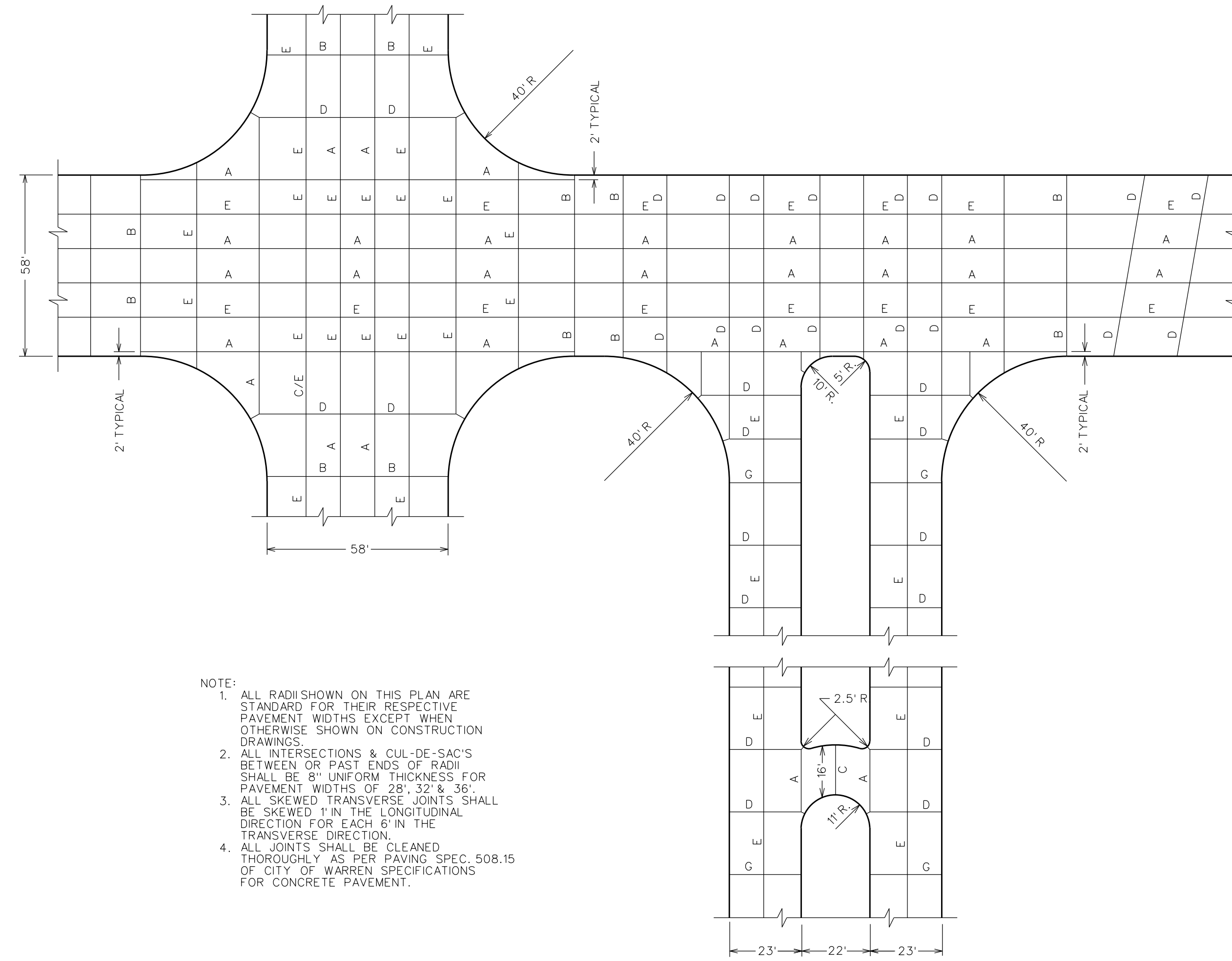
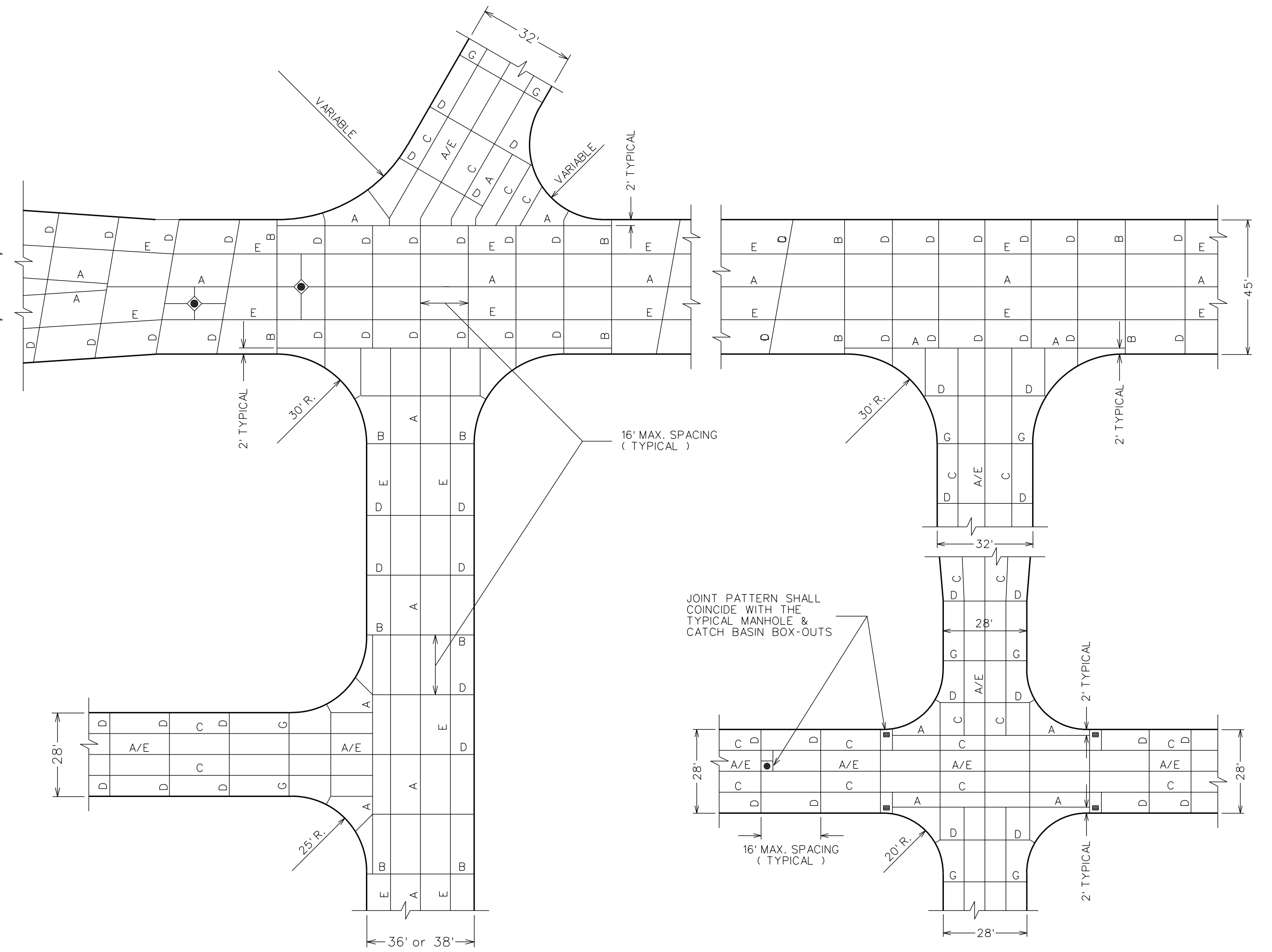


**CUL-DE-SAC**

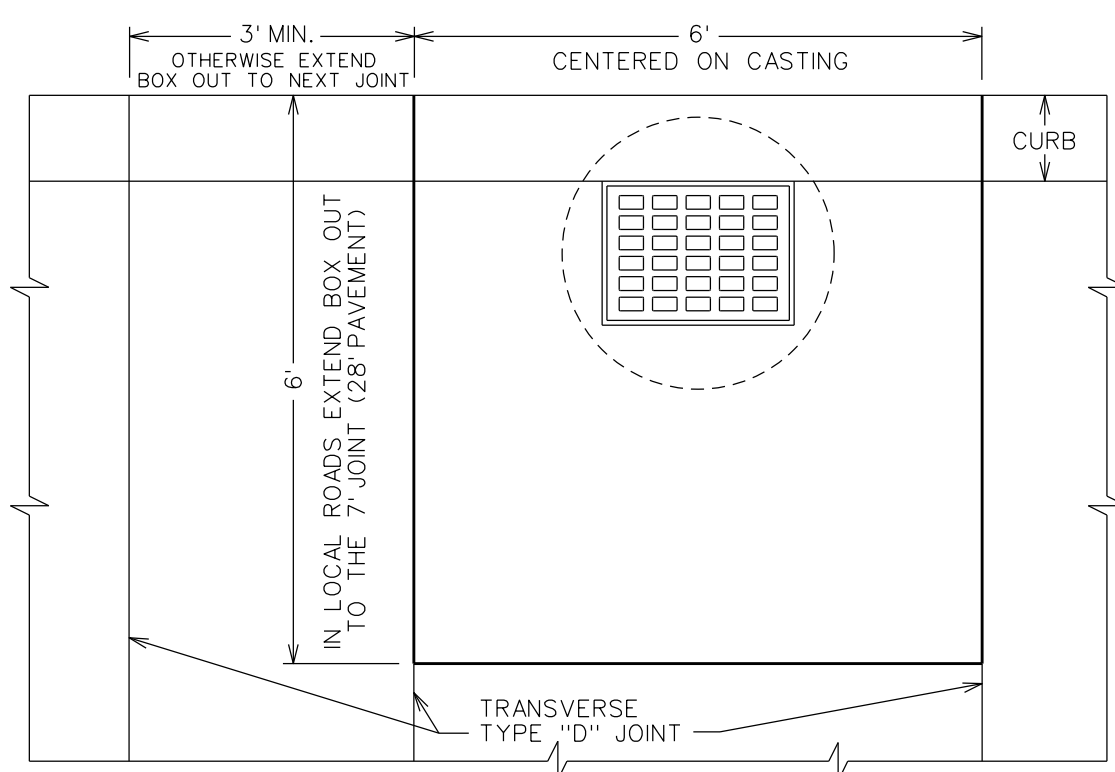
NOTE:  
1. MINIMUM RADIUS FOR A RESIDENTIAL CUL-DE-SAC SHALL BE 36'.  
2. OTHER RADII SHALL BE AS DETERMINED BY THE CITY ENGINEER.



NOTE:  
1. ALL RADII SHOWN ON THIS PLAN ARE STANDARD FOR THEIR RESPECTIVE PAVEMENT WIDTHS EXCEPT WHEN OTHERWISE SHOWN ON CONSTRUCTION DRAWINGS.  
2. ALL INTERSECTIONS & CUL-DE-SAC'S BETWEEN OR PAST ENDS OF RADII SHALL BE 8' UNIFORM THICKNESS FOR PAVEMENT WIDTHS OF 28', 32' & 36'.  
3. ALL SKEWED TRANSVERSE JOINTS SHALL BE SKEWED 1° IN THE LONGITUDINAL DIRECTION FOR EACH 6' IN THE TRANSVERSE DIRECTION.  
4. ALL JOINTS SHALL BE CLEANED THOROUGHLY AS PER PAVING SPEC. 508.15 OF CITY OF WARREN SPECIFICATIONS FOR CONCRETE PAVEMENT.

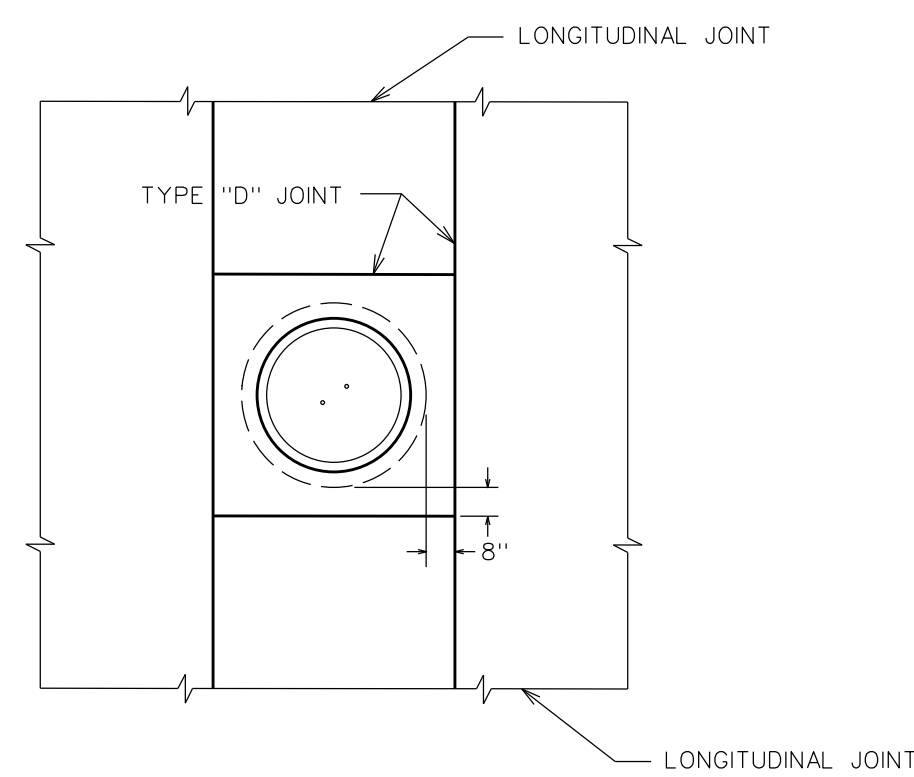


JOINT PATTERN SHALL COINCIDE WITH THE TYPICAL MANHOLE & CATCH BASIN BOX-OUTS



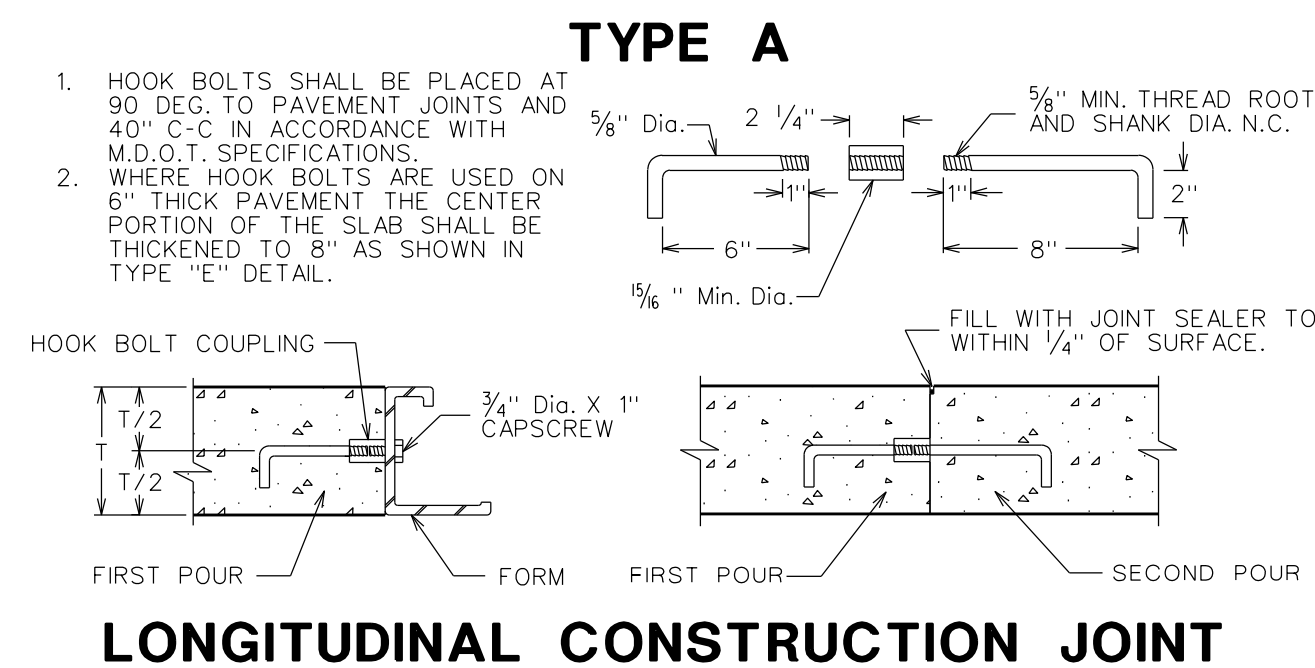
NOTE: ALL CATCH BASINS SHALL BE SEPERATED FROM THE PAVEMENT AND CURB BY BOXING OUT AROUND THE BASIN AS SHOWN. EXPANSION JOINT MATERIAL SHALL EXTEND COMPLETELY THROUGH THE CURB.

**CATCH BASIN BOXOUT**

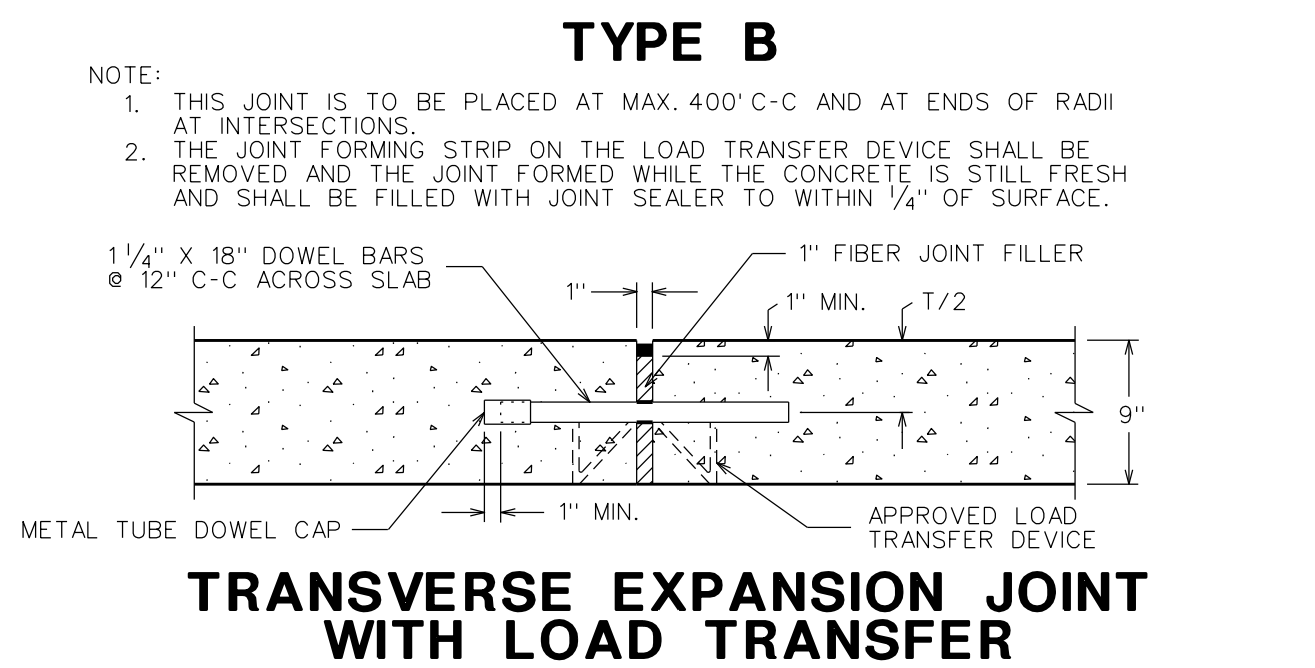


NOTE: ALL MANHOLE CASTINGS AND OTHER STRUCTURES WITHIN THE PAVEMENT SHALL BE BOXED OUT AS SHOWN.

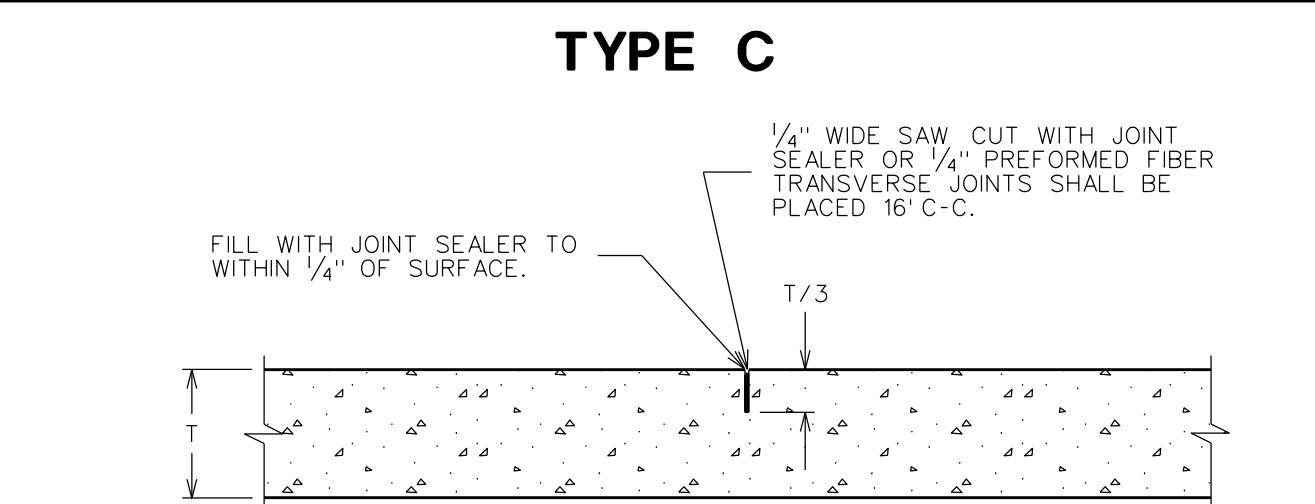
**MANHOLE BOXOUT**



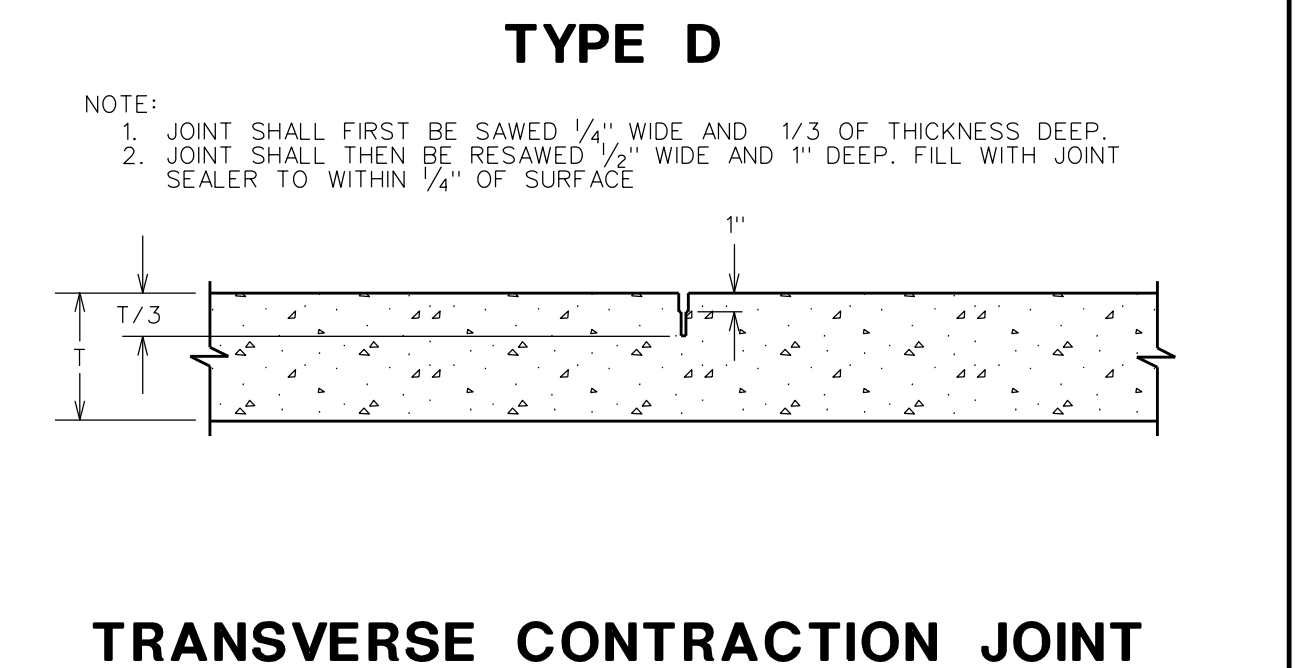
**LONGITUDINAL CONSTRUCTION JOINT**



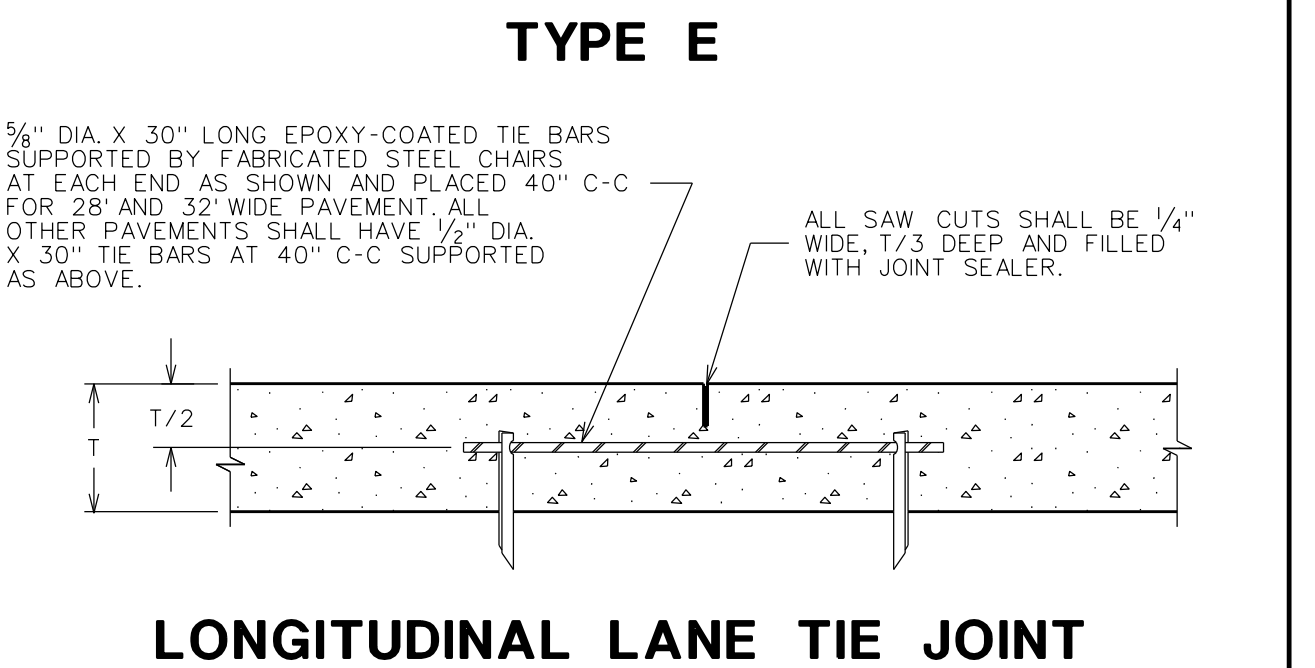
**TRANSVERSE EXPANSION JOINT WITH LOAD TRANSFER**



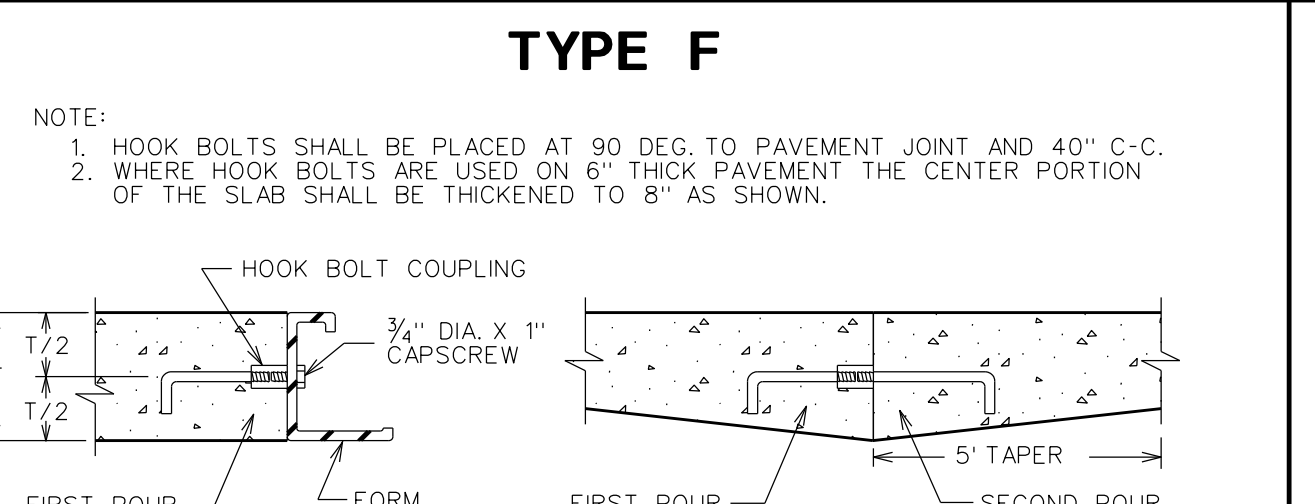
**LONGITUDINAL CONTRACTION JOINT**



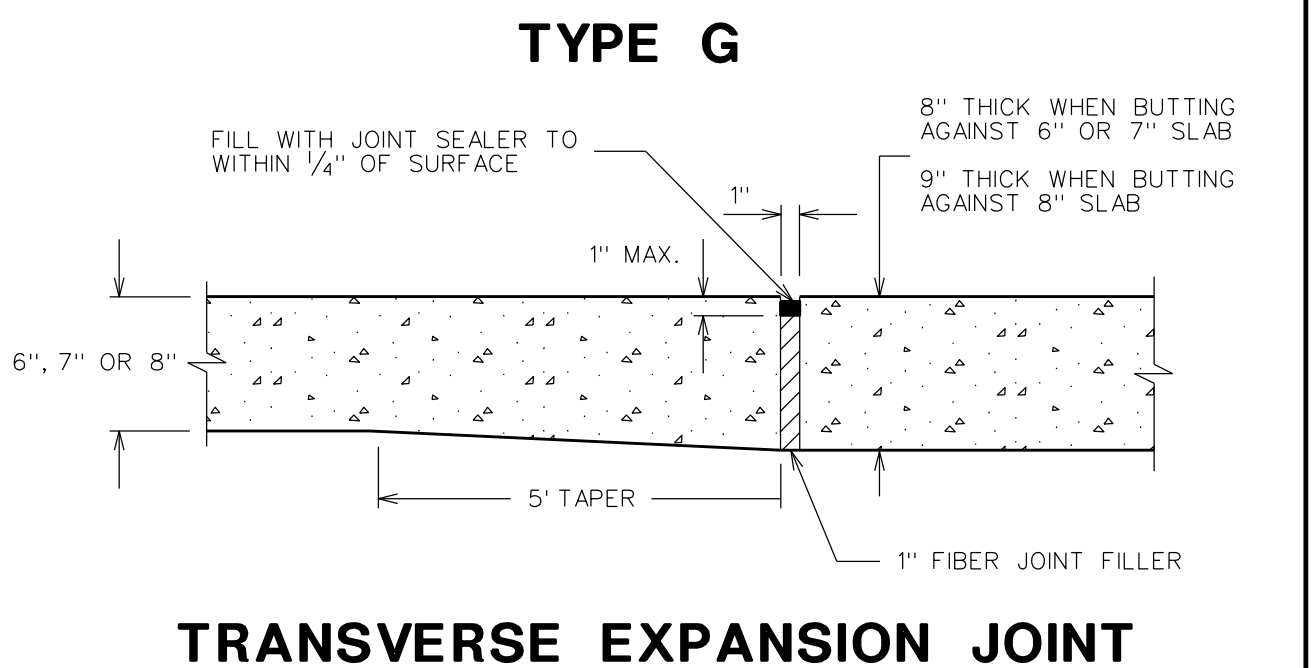
**TRANSVERSE CONTRACTION JOINT**



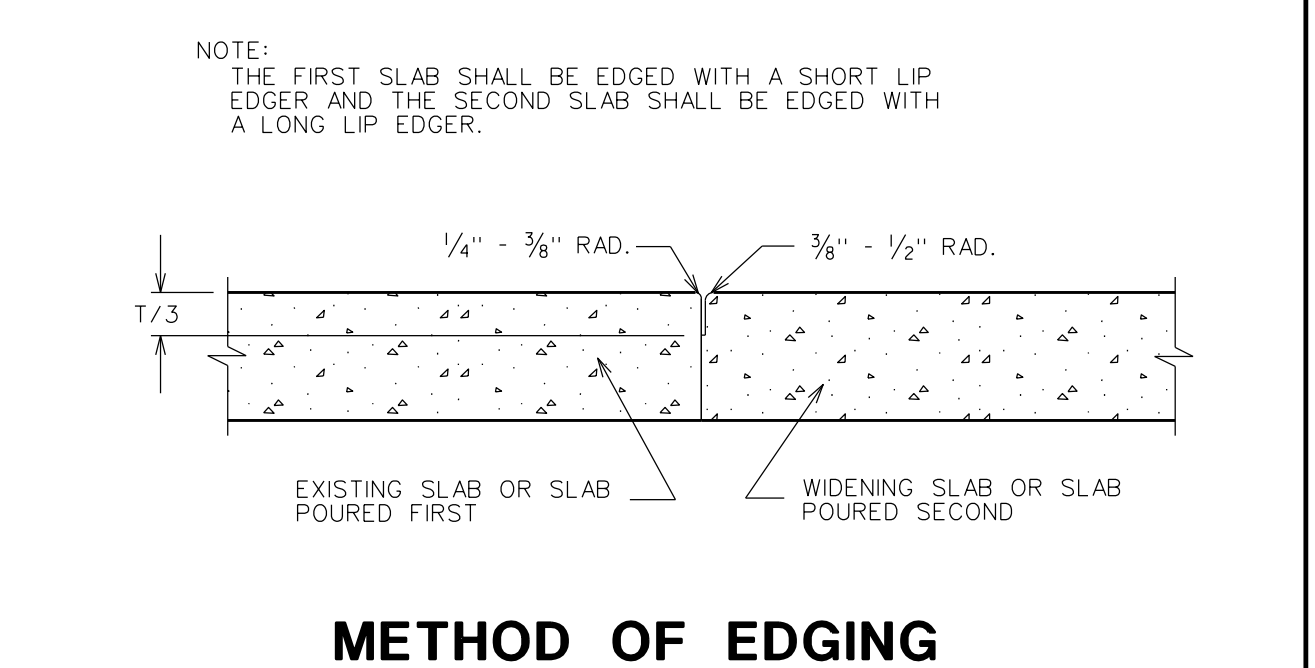
**LONGITUDINAL LANE TIE JOINT**



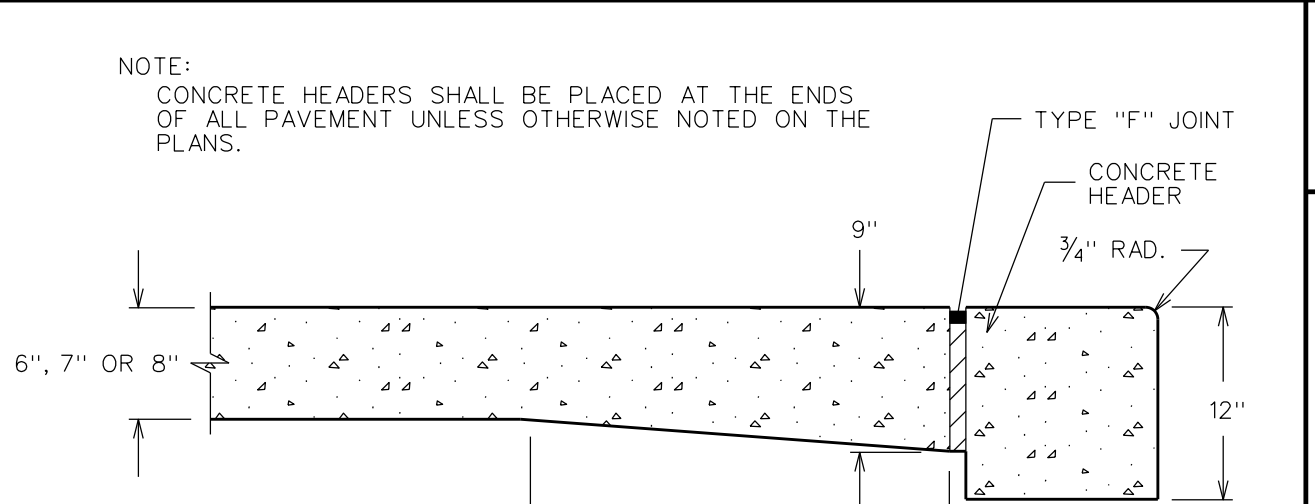
**TRANSVERSE CONSTRUCTION JOINT**



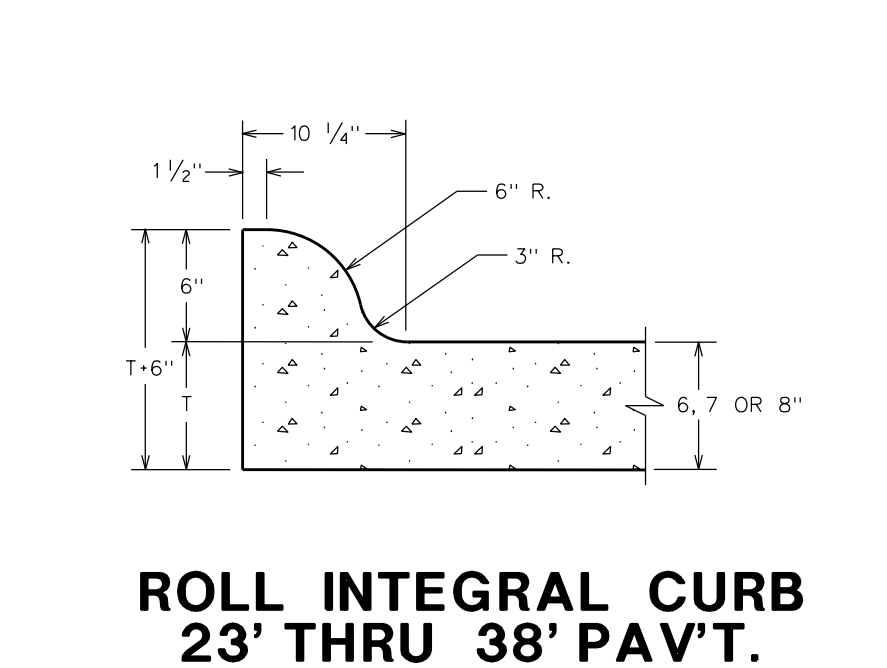
**TRANSVERSE EXPANSION JOINT**



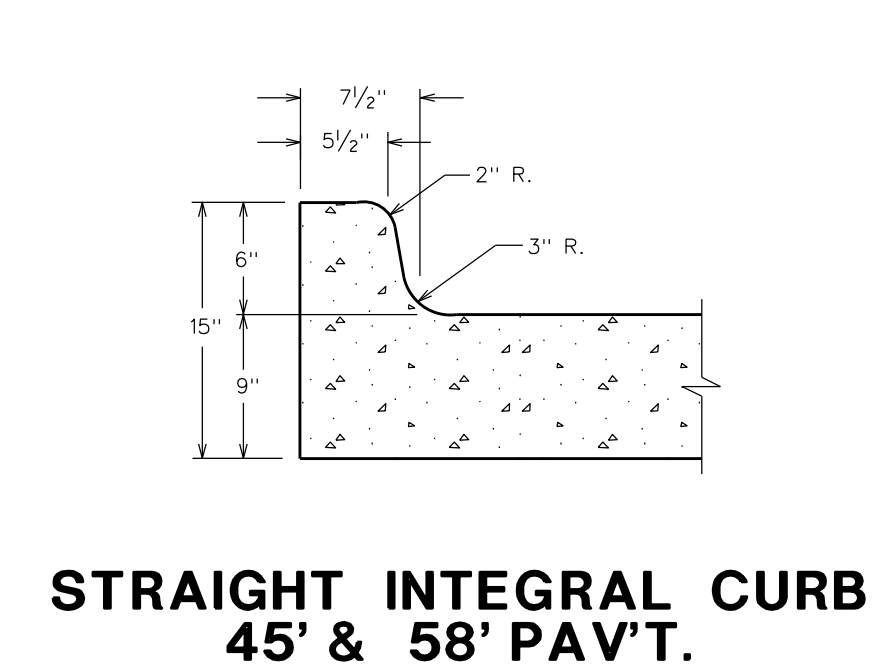
**METHOD OF EDGING**



**PAVEMENT END DETAIL**



**ROLL INTEGRAL CURB 23' THRU 38' PAV'T.**



**STRAIGHT INTEGRAL CURB 45' & 58' PAV'T.**

DIVISION OF ENGINEERING  
CITY OF WARREN, MICHIGAN

CONCRETE PAVEMENT  
DETAILS