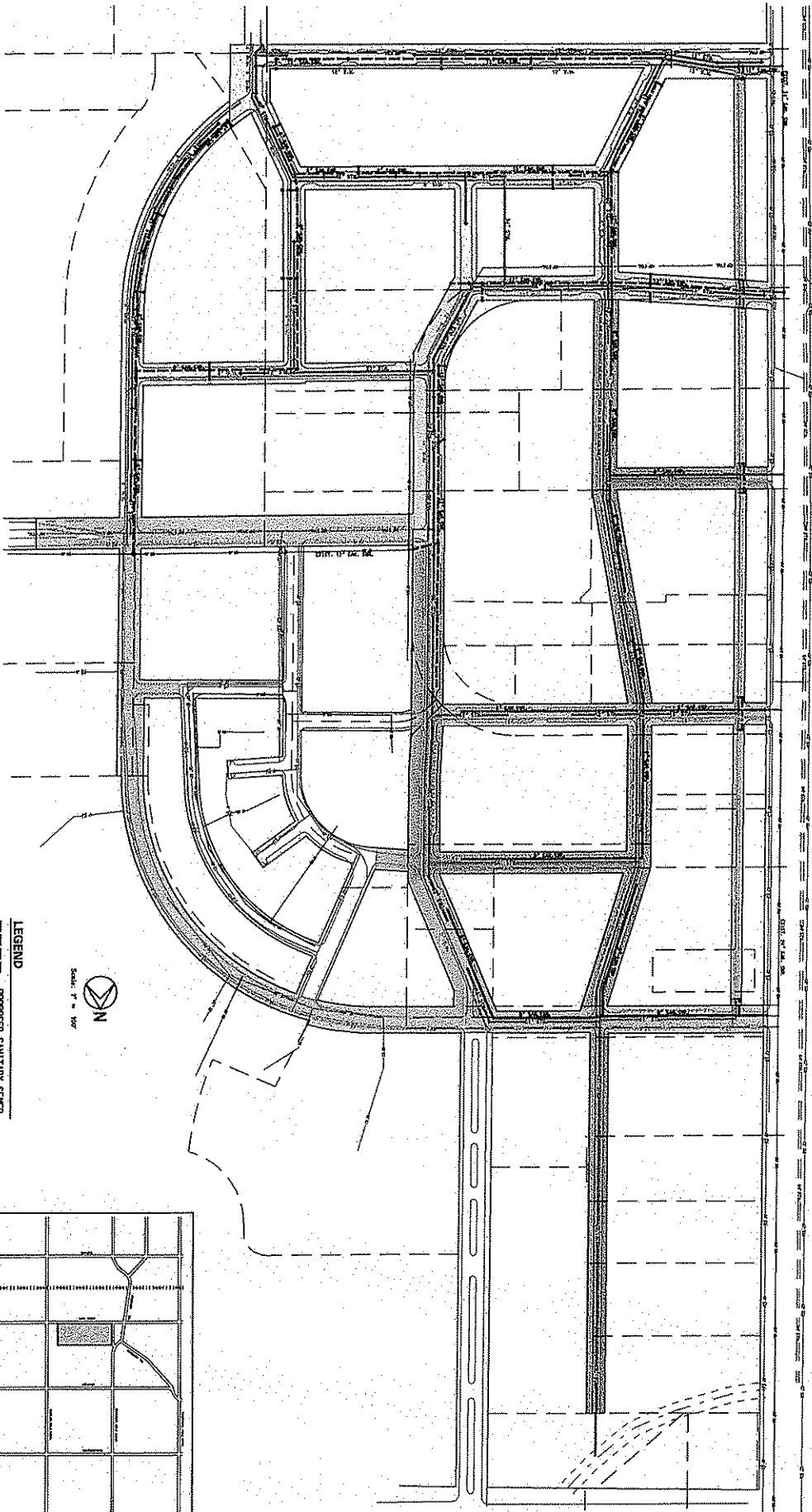
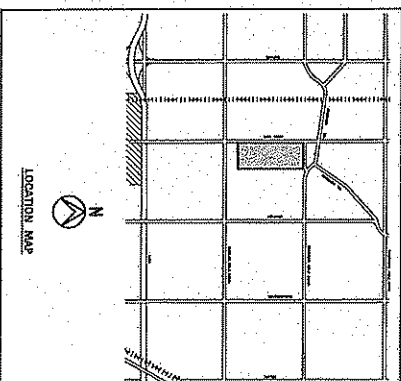


PROPOSED STREET LAYOUTS

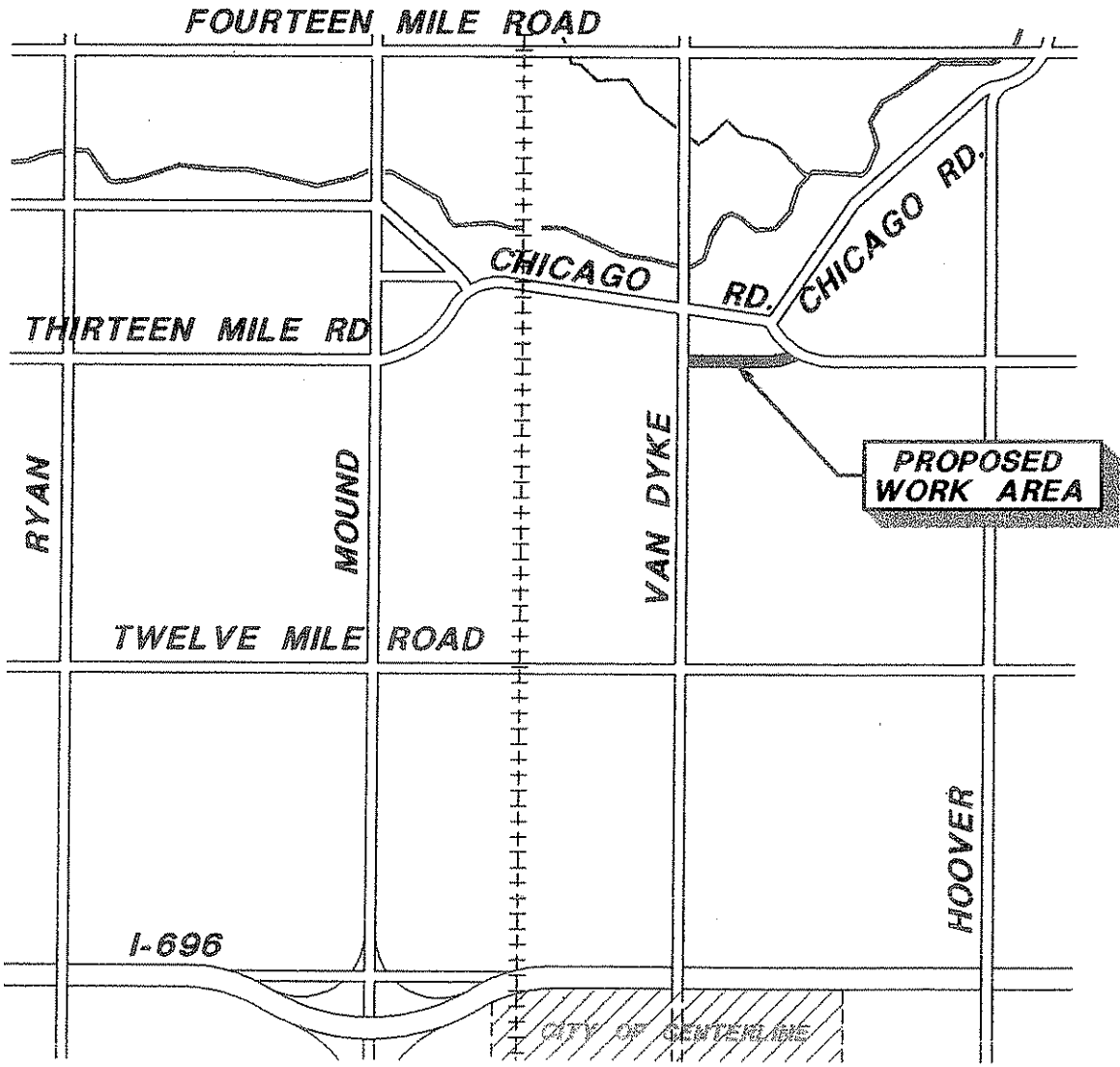


Scale: 1" = 100'

- LEGEND**
- PROPOSED SANITARY SEWER
 - PROPOSED WATER MAIN
 - EXISTING WATER MAIN
 - EXISTING PROPERTY LINE
 - EXISTING SANITARY SEWER
 - EXISTING STORM SEWER
 - EXISTING WATER MAIN
 - PHASE 1
 - PHASE 2
 - PHASE 3
 - PHASE 4
 - PHASE 5
 - BY DEVELOPER
 - EXIST. STREET TO REMAIN



HRC
 HERRINGTON & COMPANY, INC.
 10000 Wilshire Blvd., Suite 200
 Beverly Hills, CA 90210
 Tel: 310.274.1111
 Fax: 310.274.1112
 www.hrc-engineers.com

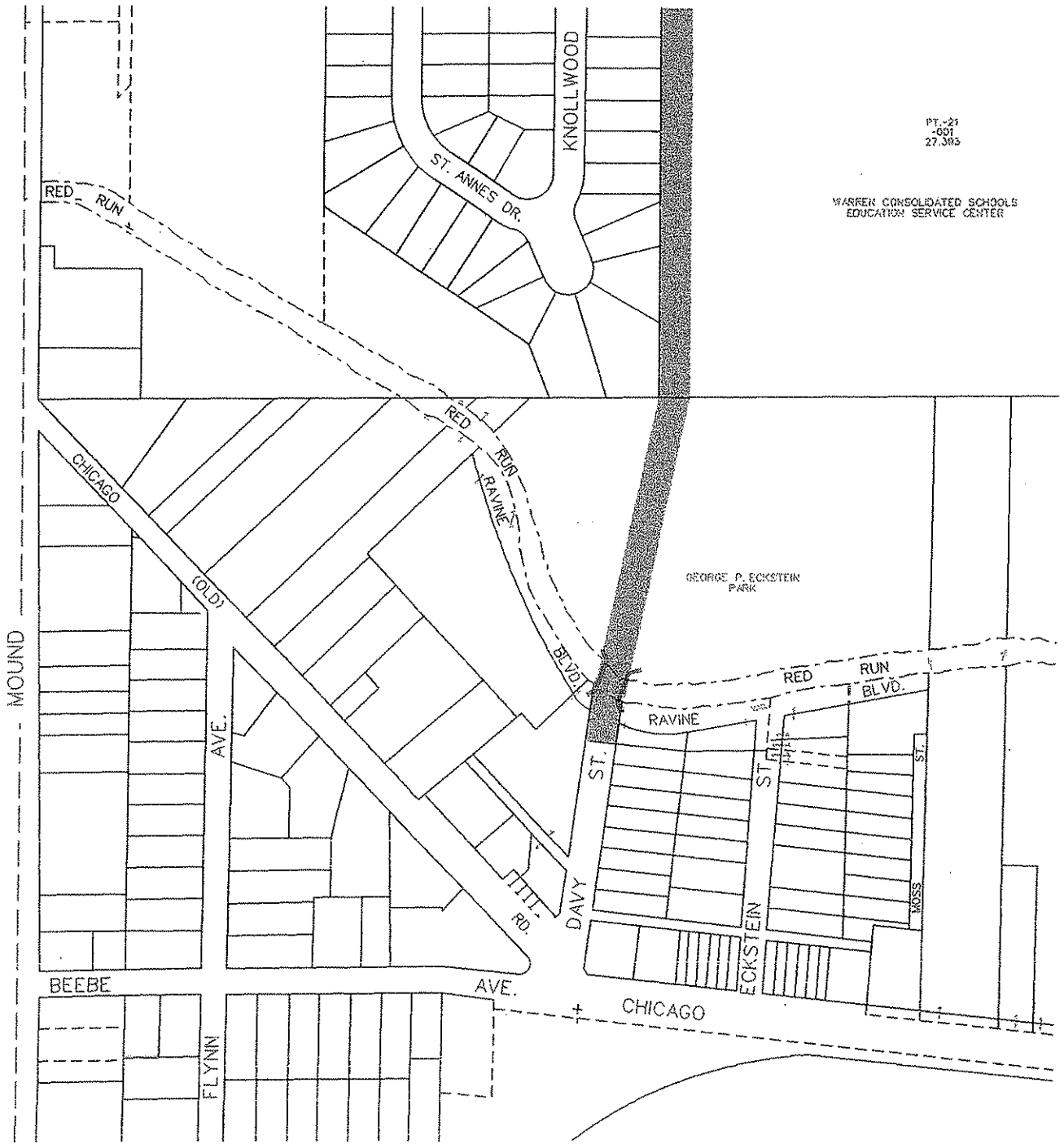


DIVISION OF ENGINEERING CITY OF WARREN, MICHIGAN			
PROPOSED STREET WIDENING AND IMPROVEMENTS OLD THIRTEEN MILE ROAD VAN DYKE TO CHICAGO ROAD			
FILE NEW PROPOSALS	PREPARED BY D.D.Z.	DATE 2/01/2002	SHEET NO. 1 OF 1
		SCALE NOT TO SCALE	

PT. -21
-001
27.383

WARREN CONSOLIDATED SCHOOLS
EDUCATION SERVICE CENTER

GEORGE P. ECKSTEIN
PARK



LEGEND:



PROPOSED NEW R.O.W.



PROPOSED NEW BRIDGE

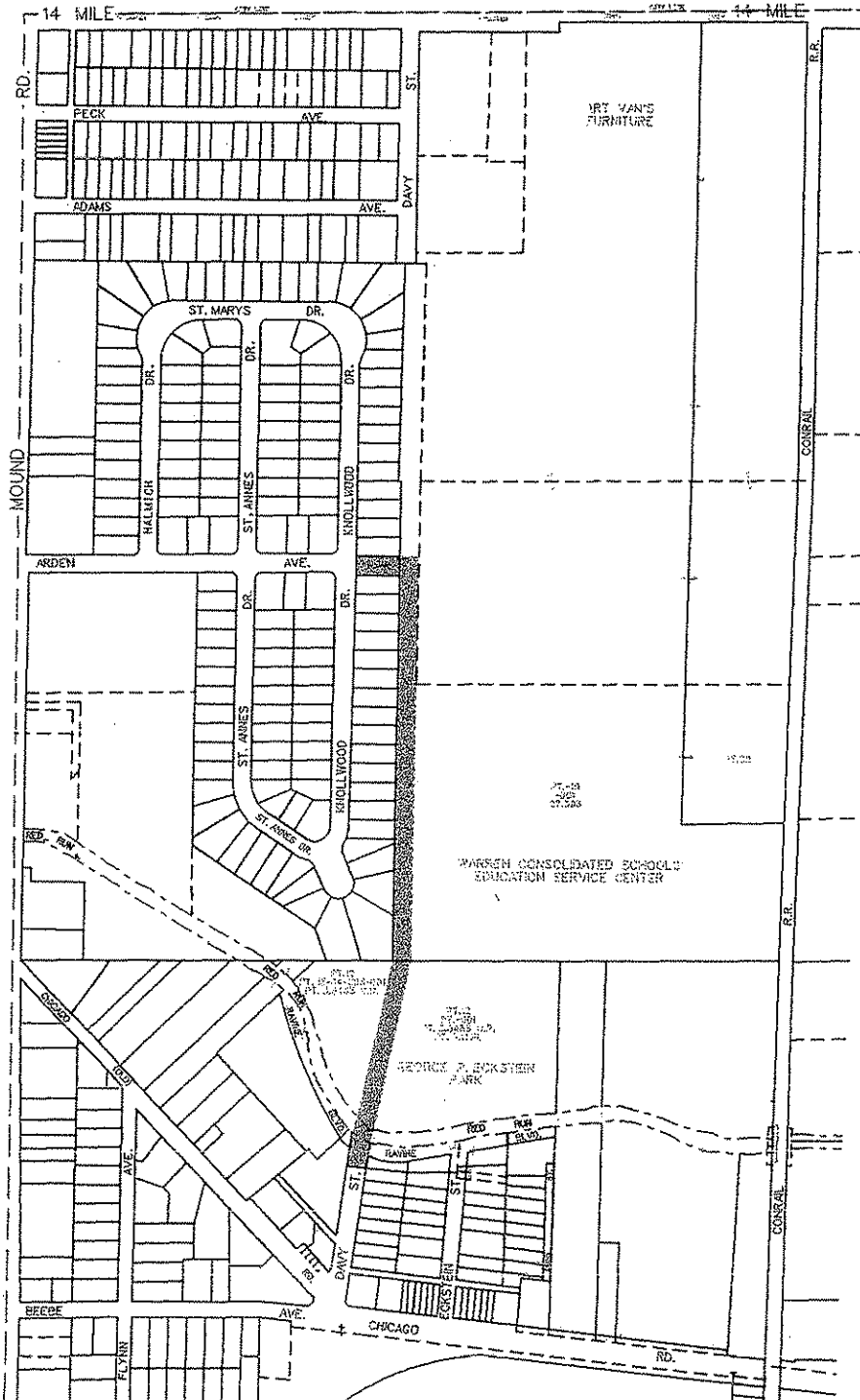


**DIVISION OF ENGINEERING
CITY OF WARREN, MICHIGAN**

**PROPOSED NEW BRIDGE
OVER THE RED RUN DRAIN
AT DAVY STREET**

FILE: NEW PROPOSALS	PREPARED BY: D.D.Z.	DATE: 2/07/2002	SCALE: 1"=300'	SHEET NO. 1 OF 1
---------------------	------------------------	--------------------	-------------------	---------------------

City of Sterling Heights



LEGEND:

 PROPOSED NEW R.O.W.



**DIVISION OF ENGINEERING
CITY OF WARREN, MICHIGAN**

**PROPOSED DAVY AND ARDEN
STREET EXTENSIONS**

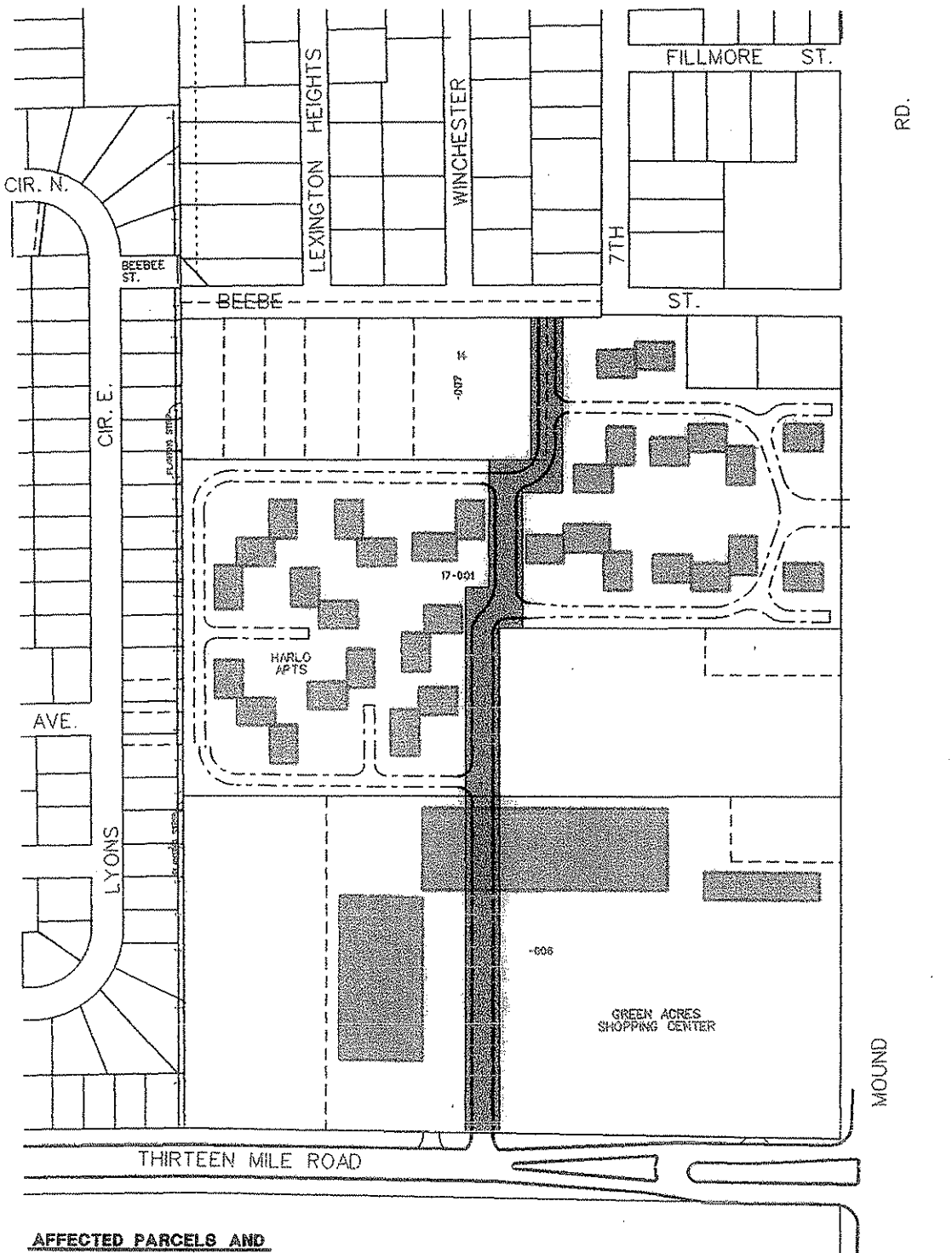
FILE: NEW PROPOSALS

PREPARED BY
D.D.Z.

DATE
12/2002

SCALE
1"=600'

SHEET NO.
1 OF 1



**AFFECTED PARCELS AND
PROPOSED NEW R.O.W.**

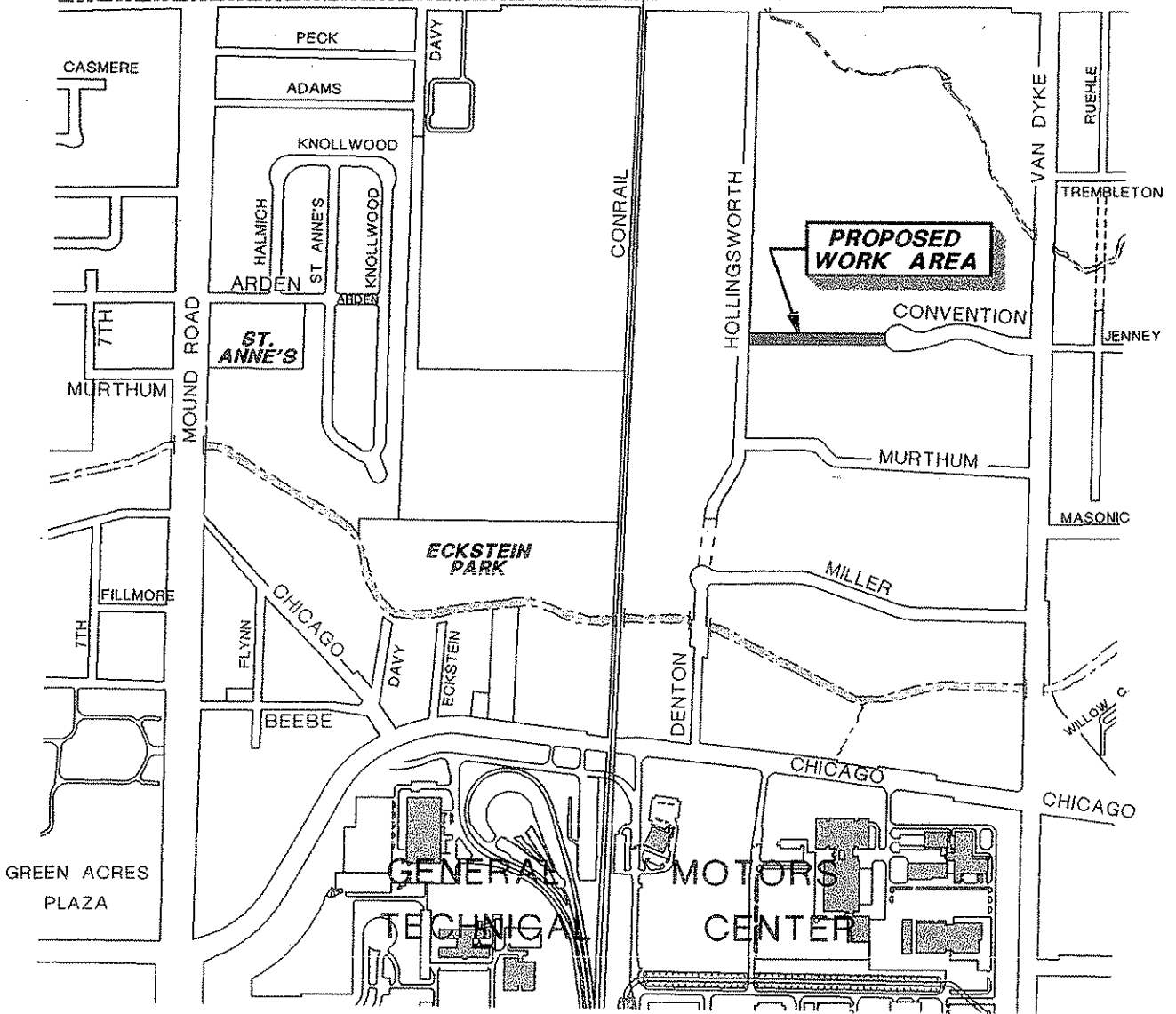


**DIVISION OF ENGINEERING
CITY OF WARREN, MICHIGAN**


**PROPOSED NEW ROAD
THIRTEEN MILE ROAD TO BEEBE**

FILE NEW PROPOSALS	PREPARED BY: D.D.Z.	DATE: 2/02/2002	SCALE: 1"=300'	SHEET NO. 1 OF 1
--------------------	------------------------	--------------------	-------------------	---------------------

14 MILE RD.



LEGEND:

 PROPOSED CONVENTION BLVD. EXTENSION



DIVISION OF ENGINEERING
CITY OF WARREN, MICHIGAN

PROPOSED STREET EXTENSION AND IMPROVEMENTS
CONVENTION BOULEVARD
HOLLINGSWORTH TO APPROX. 825' EAST

FILE NEW PROPOSALS	PREPARED BY D.D.Z.	DATE 2/05/2002	SCALE: NOT TO SCALE	SHEET NO. 1 OF 1
--------------------	-----------------------	-------------------	------------------------	---------------------

City of Sterling Heights

14 MILE ROAD

STERLING
POND DRIVE

R.R.

AVE

CONRAIL

HOLLINGSWORTH

R.R.

MURTHUM

LEGEND:

- ===== PROPOSED NEW 70' WD. R.O.W.
- PROPOSED NEW STREET CONNECTION TO 14 MILE ROAD



**DIVISION OF ENGINEERING
CITY OF WARREN, MICHIGAN**

**PROPOSED HOLLINGSWORTH AVENUE
RELOCATION AND IMPROVEMENTS**

FILE: NEW PROPOSALS	PREPARED BY: D.D.Z.	DATE: 2/01/2002	SCALE: 1"=400'	SHEET NO. 1 OF 1
---------------------	------------------------	--------------------	-------------------	---------------------